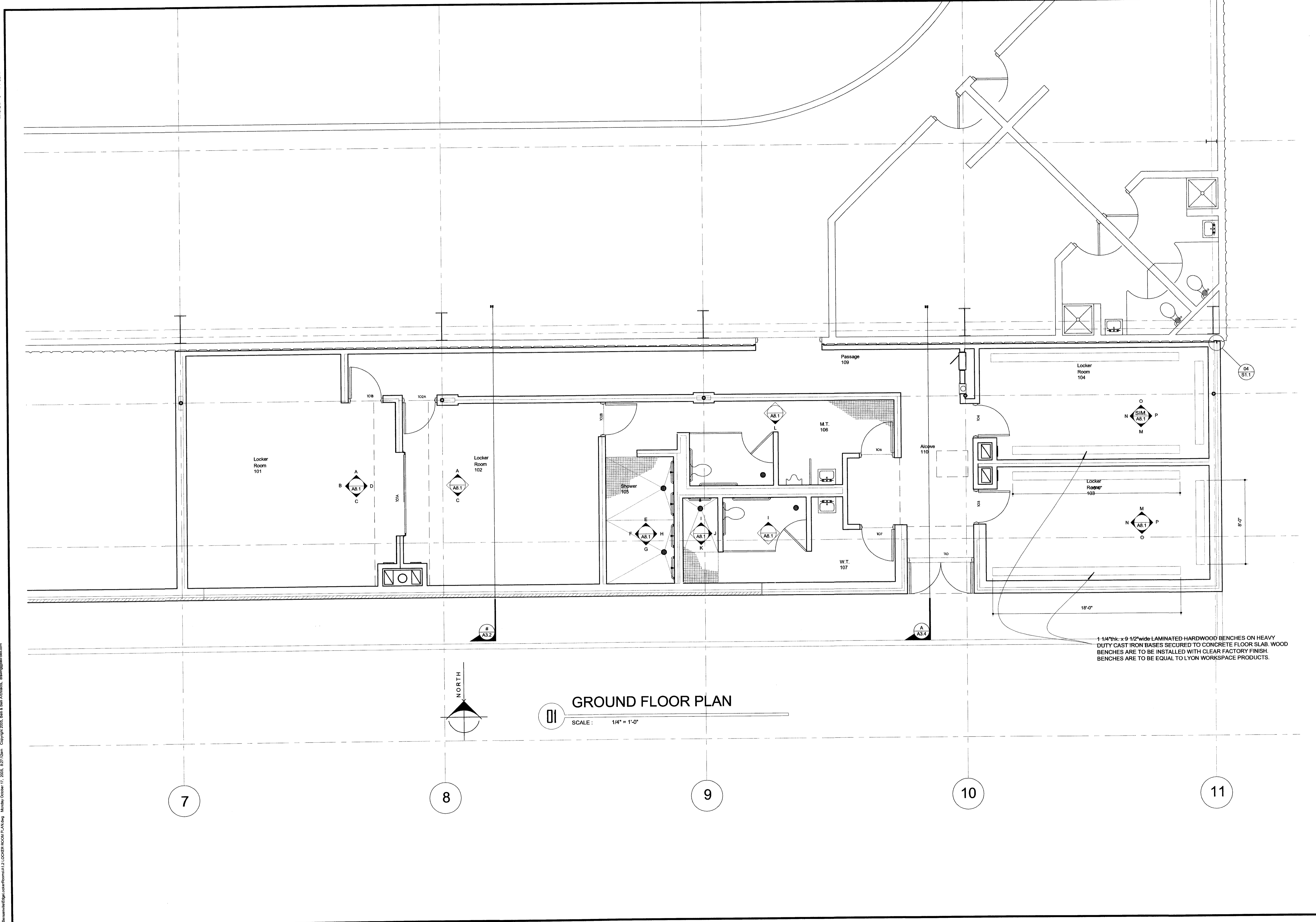
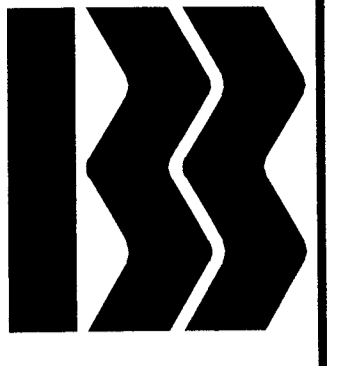


T:\Users\belli\Documents\LockerRoom\A1.2 LOCKER ROOM PLAN.dwg Monday, October 17, 2005, 8:27:13am Copyright 2005, Bell & Bell Architects, drawing@bell-bell.com
 BELL & BELL ARCHITECTS & ENGINEERS IN CORPORATION
 39 SOUTH MILWAUKEE AVENUE
 WHEELING ILLINOIS 60690



GROUND FLOOR PLAN
 SCALE: 1/4" = 1'-0"

1-1/4" thick x 9 1/2" wide LAMINATED HARDWOOD BENCHES ON HEAVY DUTY CAST IRON BASES SECURED TO CONCRETE FLOOR SLAB. WOOD BENCHES ARE TO BE INSTALLED WITH CLEAR FACTORY FINISH. BENCHES ARE TO BE EQUAL TO LYON WORKSPACE PRODUCTS.



BELL & BELL
 ARCHITECTS & ENGINEERS
 IN CORPORATION
 BELL & BELL
 OF MISSOURI
 IN CORPORATION
 ILLINOIS OFFICE
 39 SOUTH MILWAUKEE AVENUE
 WHEELING ILLINOIS 60690

©2005 Copyright,
 Bell & Bell Architects & Engineers.
 All rights reserved. No part of this work
 may be used, reproduced, distributed,
 displayed or otherwise communicated in
 any form or by any means without the
 prior, written consent of Bell & Bell
 Architects & Engineers.

NO.	DATE	DESCRIPTION	BY	REVISIONS

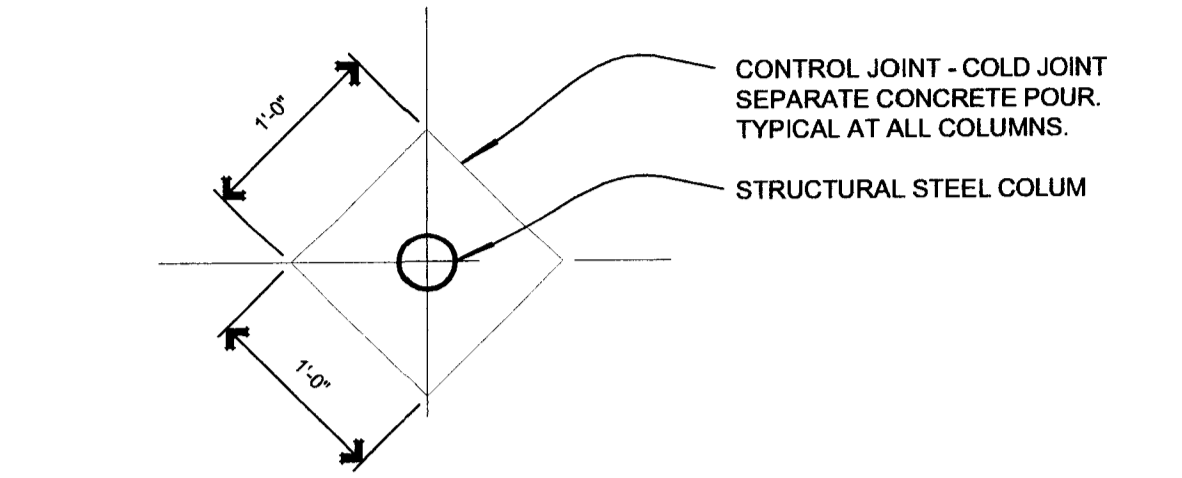
COMM. NO.	1640
DATE	10.12.2005

LOCKER ROOM PLAN
 THE EDGE ICE ARENA
 LOCKER ROOM ADDITION
 545 John Street, Bensenville, Illinois 60106
 PROJECT

SHEET
A1.2
 OF

BELL & BELL ARCHITECTS & ENGINEERS, INC.

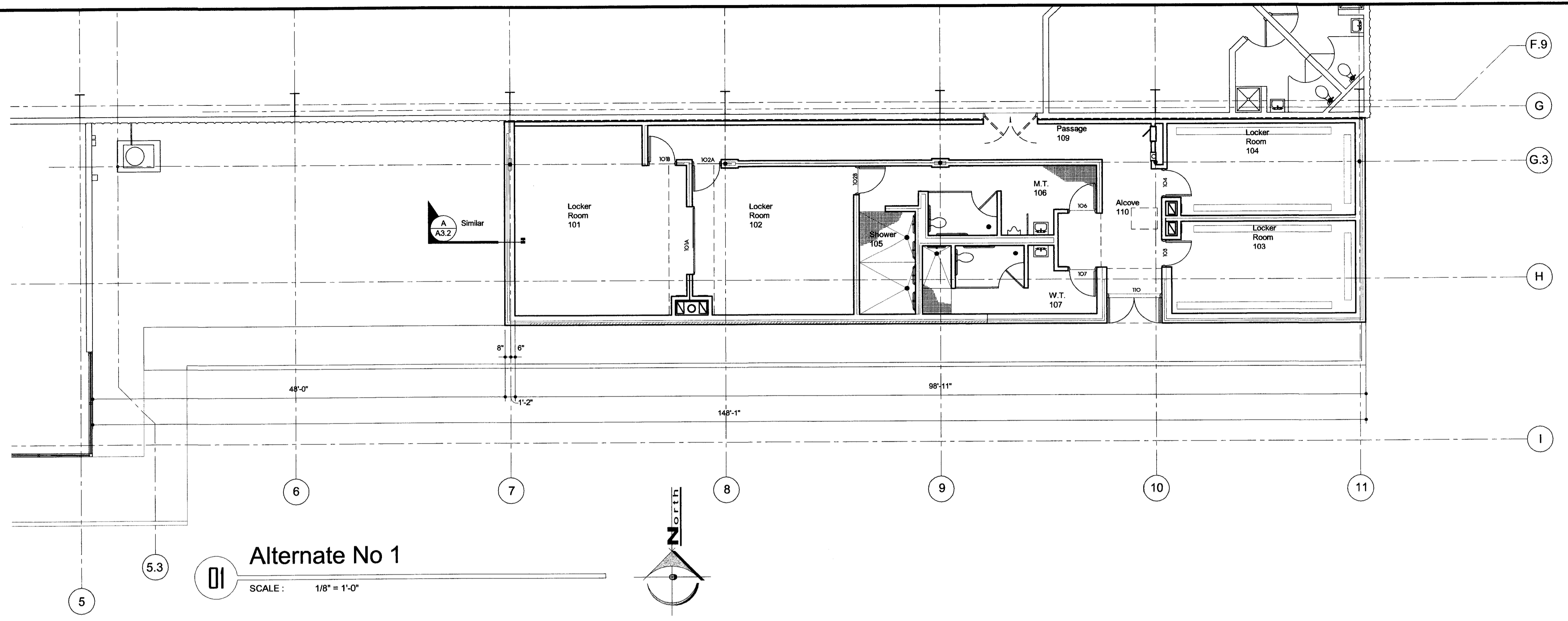
T:\Share\Hilltop\LockerRoomA1.1.GROUND FLOOR PLAN.dwg - Monday, October 17, 2005, 12:27:08pm. Copyright 2005, Bell & Bell Architects, drawing@bellandbell.com



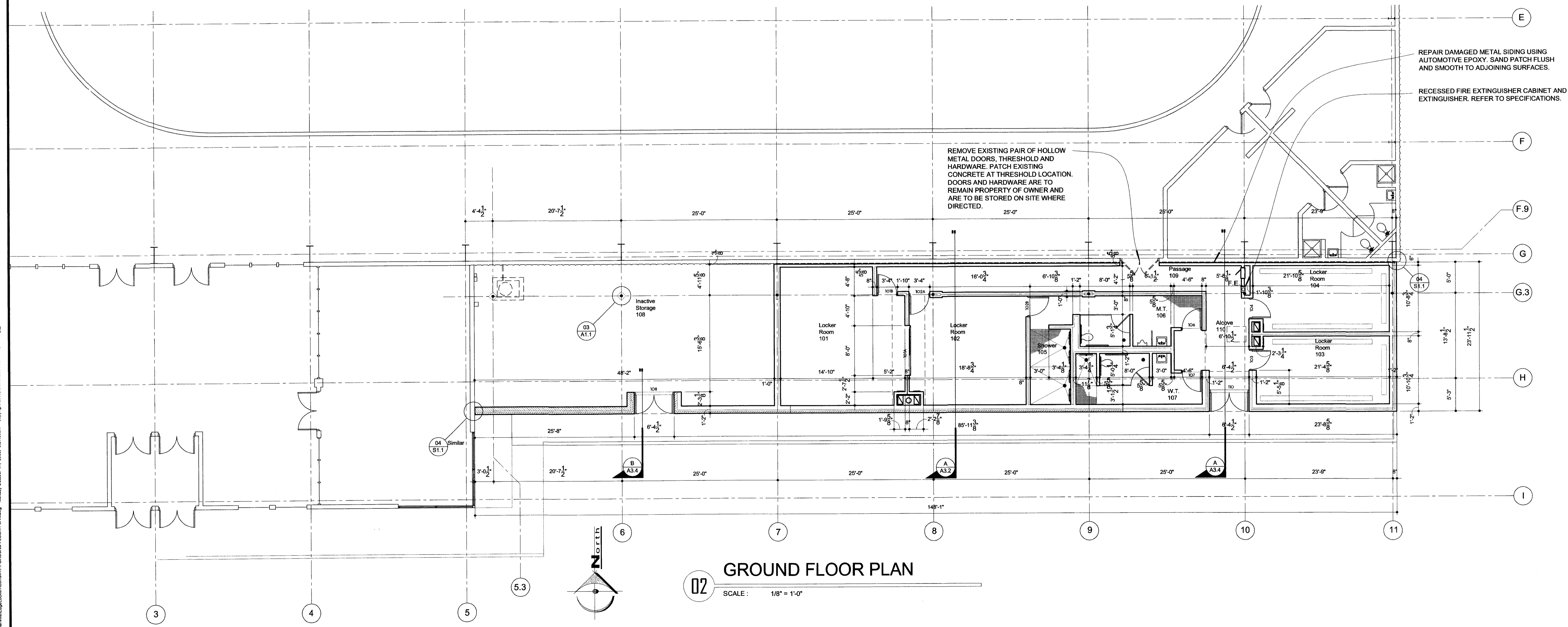
CONTROL JOINT - COLD JOINT
SEPARATE CONCRETE POUR.
TYPICAL AT ALL COLUMNS.

STRUCTURAL STEEL COLUMN

03 Control Joint @ Column
SCALE: 1" = 1'-0"



01 Alternate No 1
SCALE: 1/8" = 1'-0"



02 GROUND FLOOR PLAN
SCALE: 1/8" = 1'-0"

REMOVE EXISTING PAIR OF HOLLOW METAL DOORS, THRESHOLD AND HARDWARE. PATCH EXISTING CONCRETE AT THRESHOLD LOCATION. DOORS AND HARDWARE ARE TO REMAIN PROPERTY OF OWNER AND ARE TO BE STORED ON SITE WHERE DIRECTED.

REPAIR DAMAGED METAL SIDING USING AUTOMOTIVE EPOXY. SAND PATCH FLUSH AND SMOOTH TO ADJOINING SURFACES.

RECESSED FIRE EXTINGUISHER CABINET AND EXTINGUISHER. REFER TO SPECIFICATIONS.

B

BELLI & BELL
ARCHITECTS & ENGINEERS
INCORPORATED

BELLI & BELL
OF MISSOURI
INCORPORATED

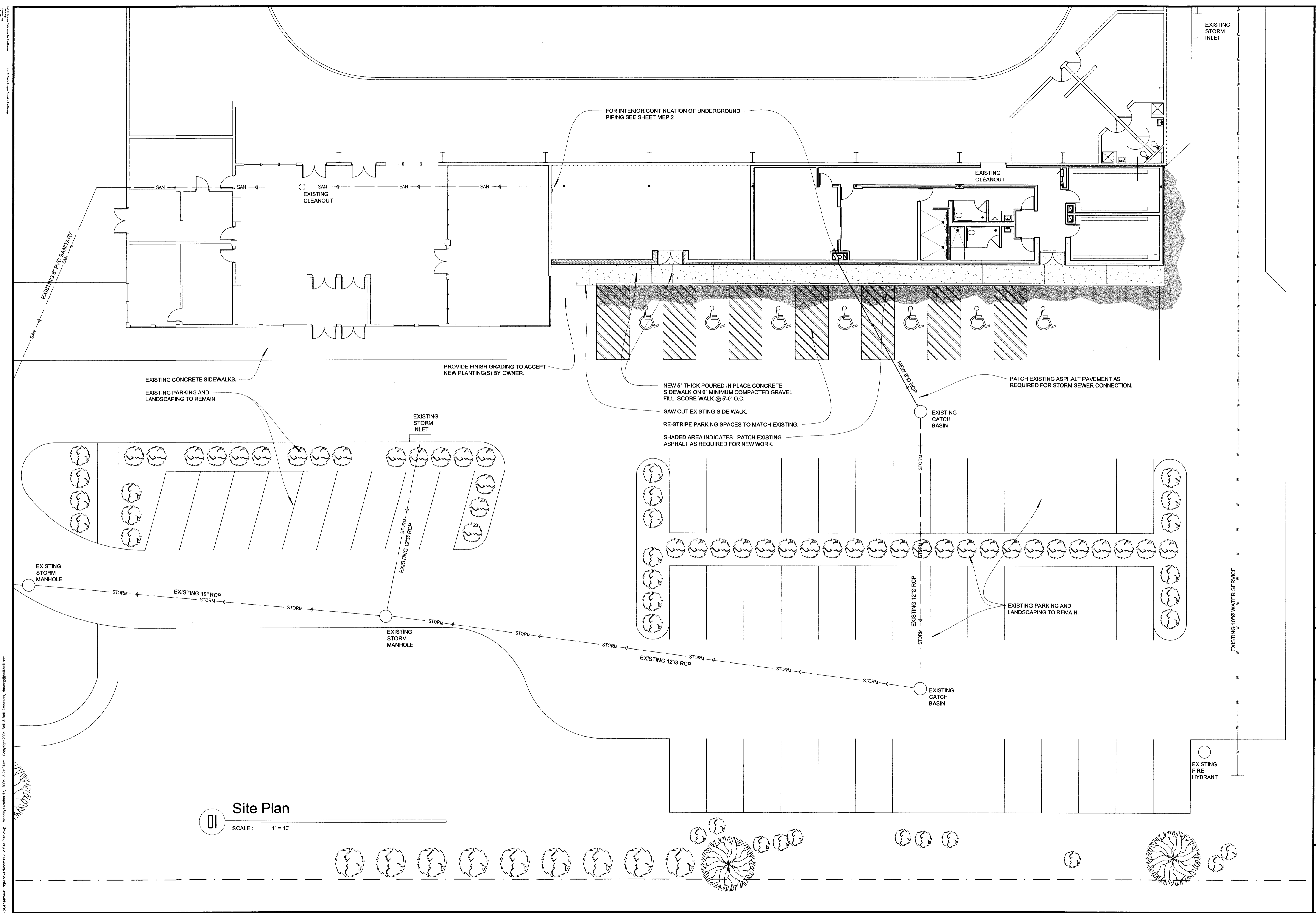
ILLINOIS OFFICE
39 SOUTH MILWAUKEE AVENUE
WHEELING ILLINOIS 60090

©2005 Copyright,
Bell & Bell Architects & Engineers.
All rights reserved. No part of this work
may be used, reproduced, distributed,
displayed or otherwise communicated in
any form or by any means without the
prior, written consent of Bell & Bell
Architects & Engineers.

NO.	DATE	DESCRIPTION	BY	REVISED

COM. NO. 1640
DATE 10.12.2005
PROJECT 545 John Street, Bensenville, Illinois 60106

SHEET **A1.1** OF



Site Plan
 SCALE: 1" = 10'

B

BELLI & BELL
 ARCHITECTS & ENGINEERS
 INCORPORATED

BELLI & BELL
 OF MISSOURI
 INCORPORATED

ILLINOIS OFFICE
 39 SOUTH MILWAUKEE AVENUE
 WHEELING ILLINOIS 60690

©2005 Copyright, Belli & Bell Architects & Engineers. All rights reserved. No part of this work may be used, reproduced, distributed, displayed or otherwise communicated in any form or by any means without the prior, written consent of Belli & Bell Architects & Engineers.

NO.	DESCRIPTION	DATE	REVISIONS

CDMM: NO. 1640
 DATE 10.12.2005

Site Plan
 THE EDGE ICE ARENA
 LOCKER ROOM ADDITION
 545 John Street, Bensenville, Illinois 60106
 PROJECT

T:\Bensenville\EdgeIceArena\Rooms\C1.2_Rm_Ren_Ang Monday, October 17, 2005, 8:27:05am Copyright 2005, Belli & Bell Architects. drawing@belli-bell.com